

### Front plate Removal and Installation

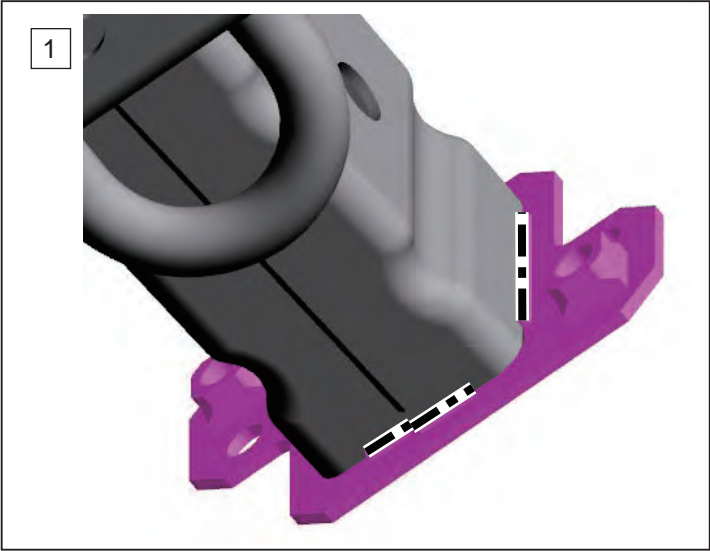
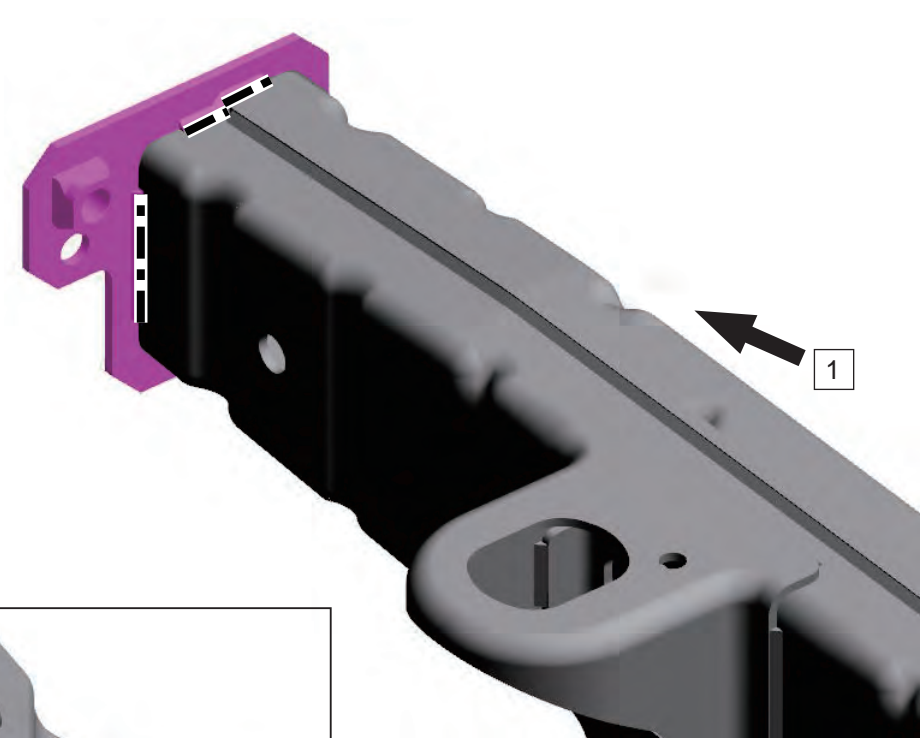


**Note :**

- Welding method is the same on both sides.

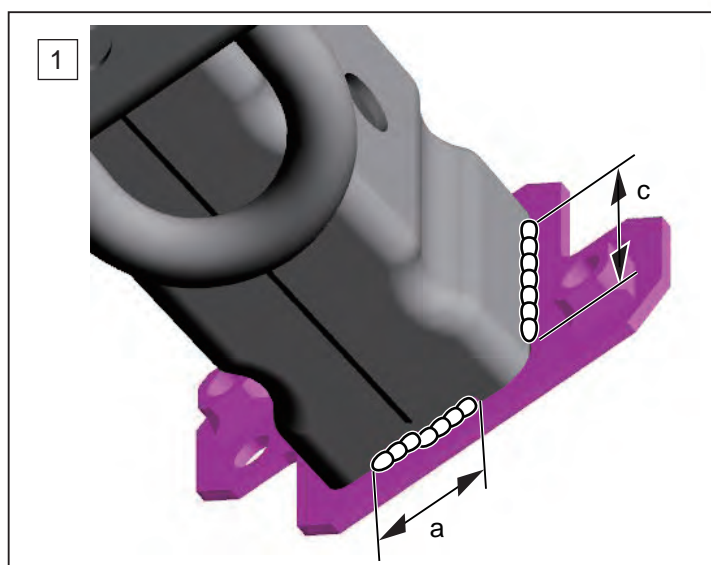
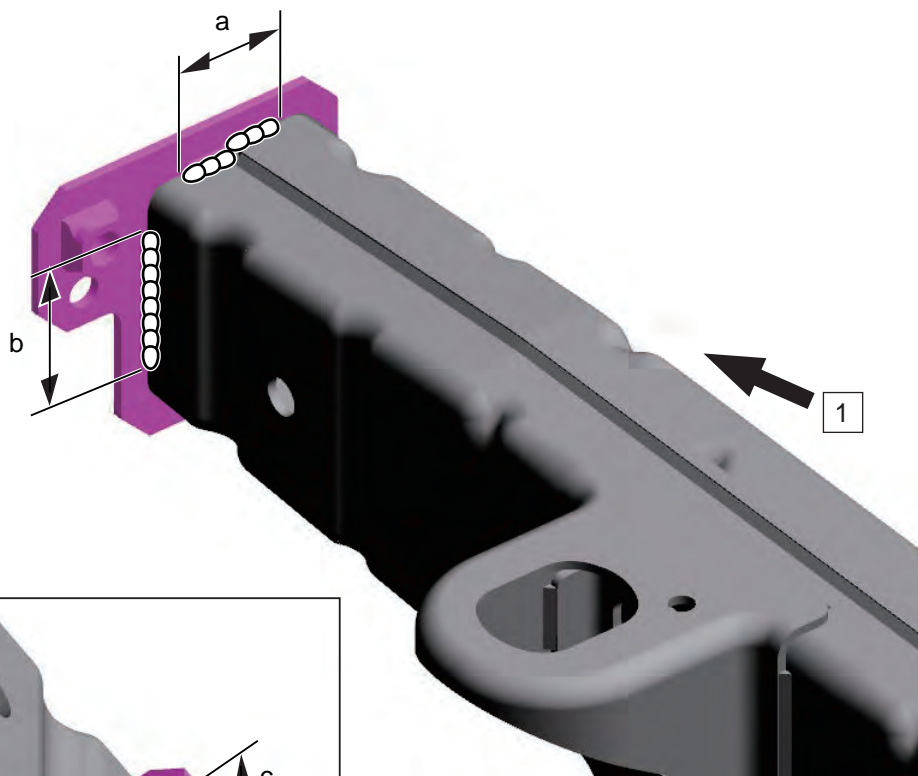
**Removal :**

1. Use a belt sander or the like, scrape off the rivet crimp to remove the front plate.



### *Installation :*

1. Install the front plate.
2. Conduct fillet weld.



- a. 31 mm {1.22 in}
  - b. 43 mm {1.69 in}
  - c. 50 mm {1.97 in}
-