

Rear body mounting bracket D Removal and Installation

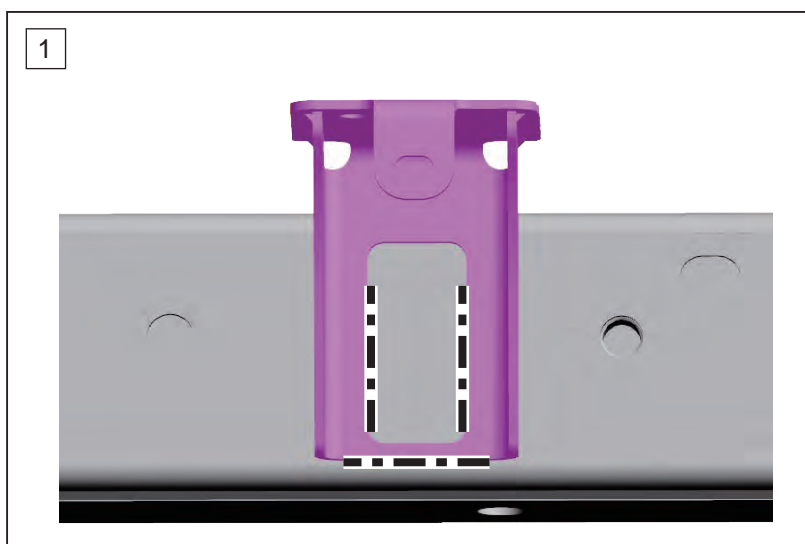
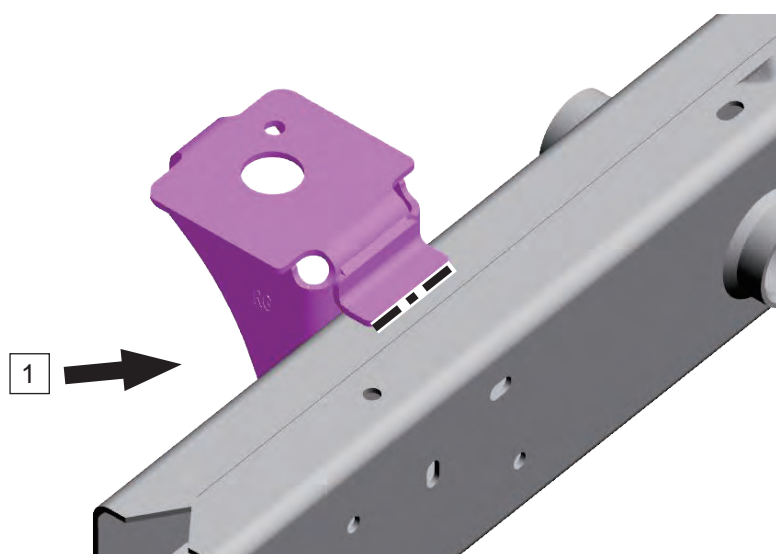


Note :

- Welding method is the same on both sides.

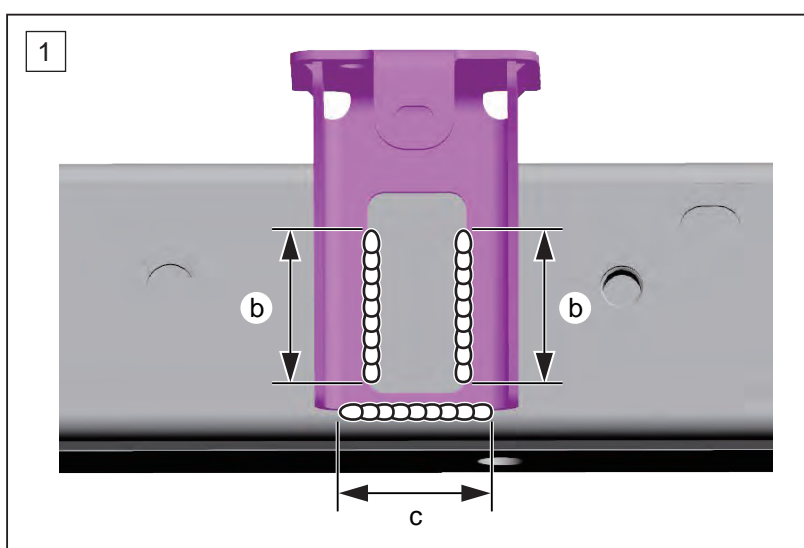
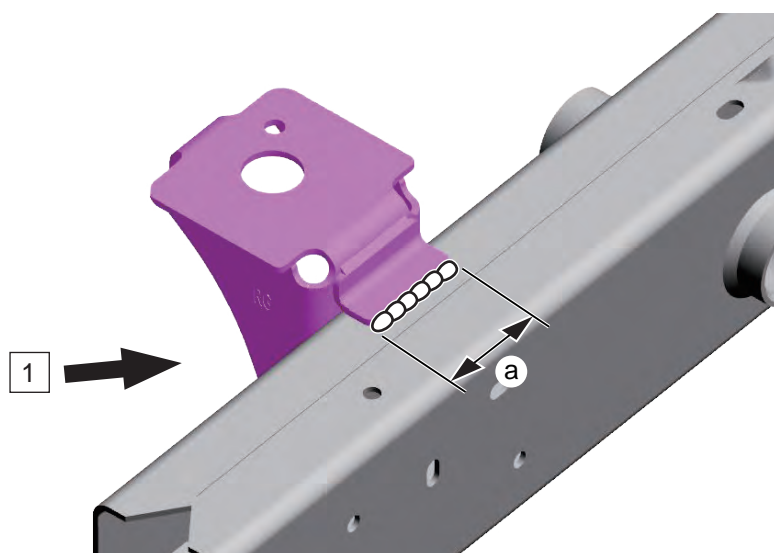
Removal :

1. Use a belt sander or the like, scrape off the rivet crimp to remove the rear body mounting bracket D.



Installation :

1. Install the rear body mounting bracket D.
2. Conduct fillet weld.



- a. 40 mm {1.57 in}
- b. 35 mm {1.38 in}
- c. 46 mm {1.81 in}